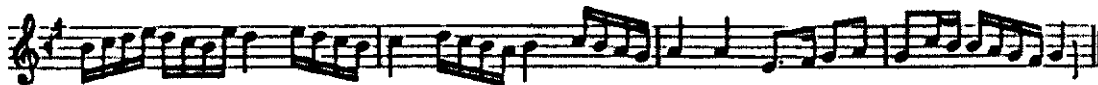
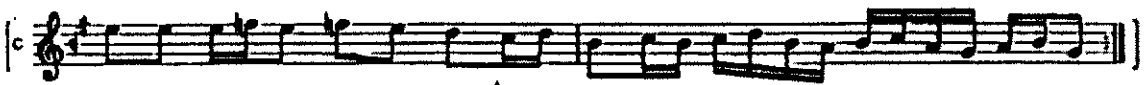


See note to 135.



H2 a

b

c

d

e

f

M c is a marginal addition introduced by the remark *terkib-i merķiun terkib-i intikâlden evvel olur* ('this subsection precedes the transitional subsection' (i.e. M d)).

H2 c: Associated with the arrow is a marginal note: *terkib-i merķiun mükerrer olur* ('this subsection is repeated'), assumed to refer to the material following rather than that preceding, i.e. to exclude from the normal repeat 1-3, which already contain repetition.

H3 a

b

c

d